



CARSELDINE VILLAGE

*Inspired living*



Different façade options available.

3 2.5 2

# Luxury, lifestyle and location

## NAME: EMERALD

Lot size 109m<sup>2</sup> | House size: 169m<sup>2</sup>

The Emerald offers all the features of a full-sized home but with minimum maintenance, terrace living. The open plan layout downstairs maximises functionality and livability. The well-equipped kitchen, living and dining area flows seamlessly to the outdoor alfresco, while the powder room provides added convenience for your family and guests.

Upstairs, the Emerald offers 3 generous bedrooms, with a master that features a walk-in-robe, ensuite and private balcony.

Features include:

- Split system air conditioning in master and living
- 3.6kW solar system with 10KW battery
- Stone benchtop in kitchen
- Private alfresco with screening for vertical garden

# From \$549,900\*

Sales Office:  
 520 Beams Road, Carseldine  
 1300 647 123  
 carseldinevillage.com.au

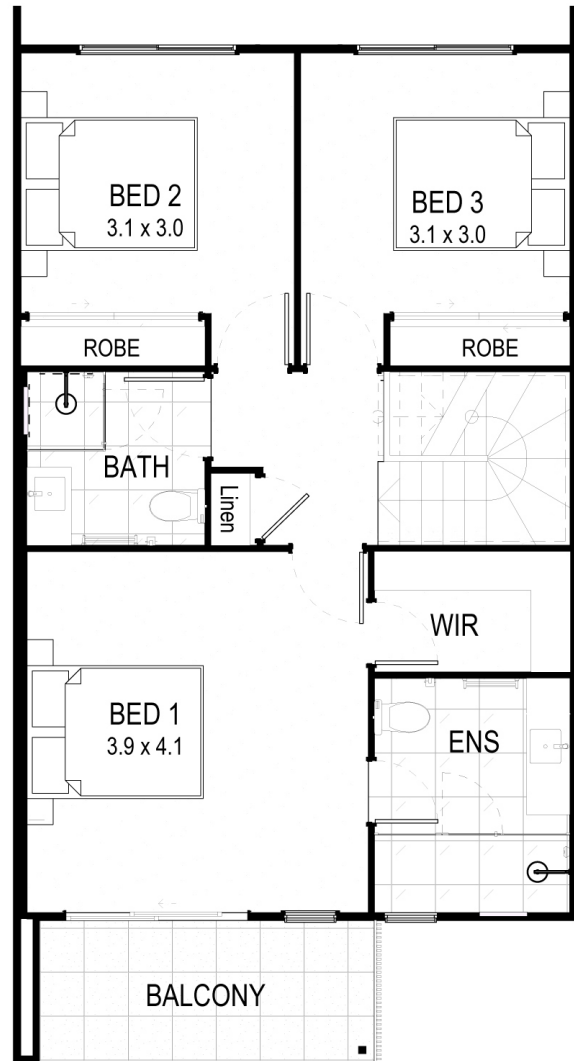
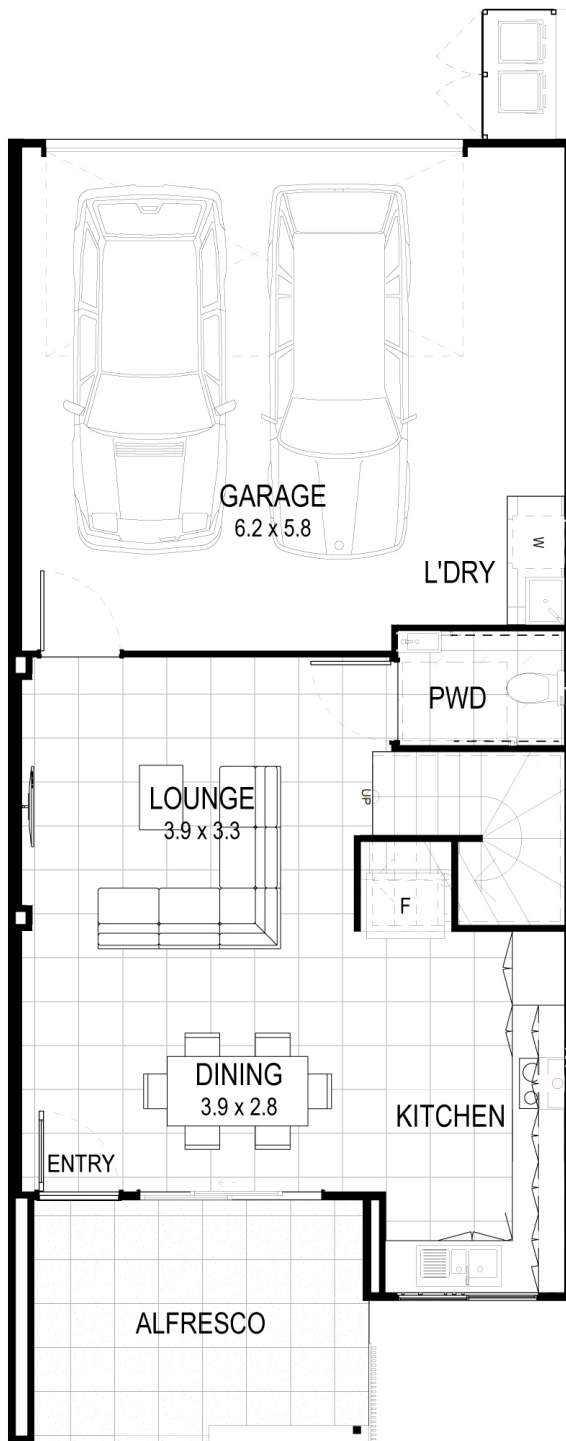


\*Price correct at time of publication and is subject to change without notice. See carseldinevillage.com.au for further information. Images are for illustrative purposes only and may not represent final built product.



CARSELDINE VILLAGE

*Inspired living*



## NAME: EMERALD

Lot size 109m<sup>2</sup> | House size: 169m<sup>2</sup>

From **\$549,900\***

Sales Office:

520 Beams Road, Carseldine

1300 647 123

[carseldinevillage.com.au](http://carseldinevillage.com.au)

\*Price correct at time of publication and is subject to change without notice. See [carseldinevillage.com.au](http://carseldinevillage.com.au) for further information. Images are for illustrative purposes only and may not represent final built product.



**Queensland  
Government**