



CARSELDINE VILLAGE

Inspired living



Different façade options available.

2 2.5 1

Architecturally designed and sustainable

NAME: ALOE 3

Suits lot size 76m² | House size: 133m²

Welcome to a sustainably modern style of living! This affordable new home and land package will provide all the modern features you are looking for, including master bedroom with large WIR robe and ensuite, open plan living and dining on the lower ground with a generous alfresco to the front.

Carseldine Village will offer a level of facilities and amenities fit for the growing family through to those that wish to live life simply, with a wide range of home sites and living options. Transport links at your doorstep and shopping centres within minutes.

Features include:

- Roof top 3.3KW Solar Power with battery storage
- Split system air-conditioning to master bed and living room
- Stone benchtop and overhead cupboards to kitchen
- European appliances and stainless-steel dishwasher

From \$460,600*

Sales Office:

520 Beams Road, Carseldine

1300 647 123

carseldinevillage.com.au

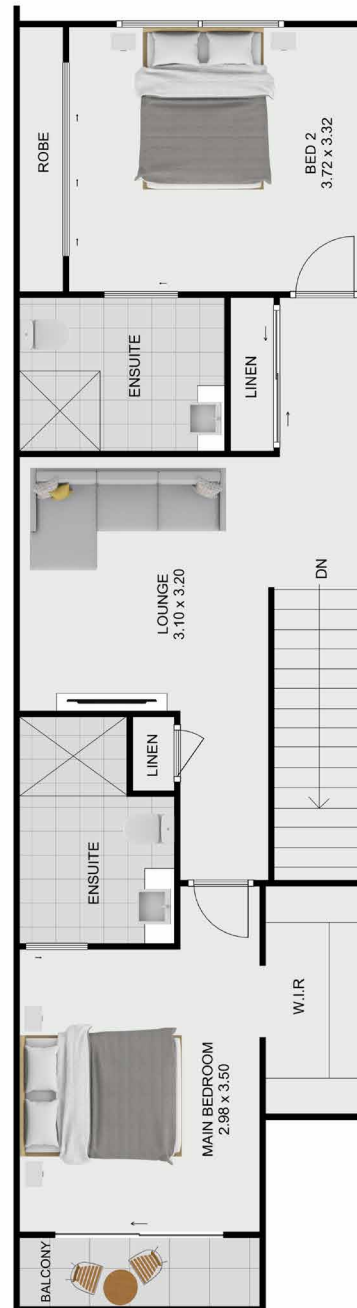
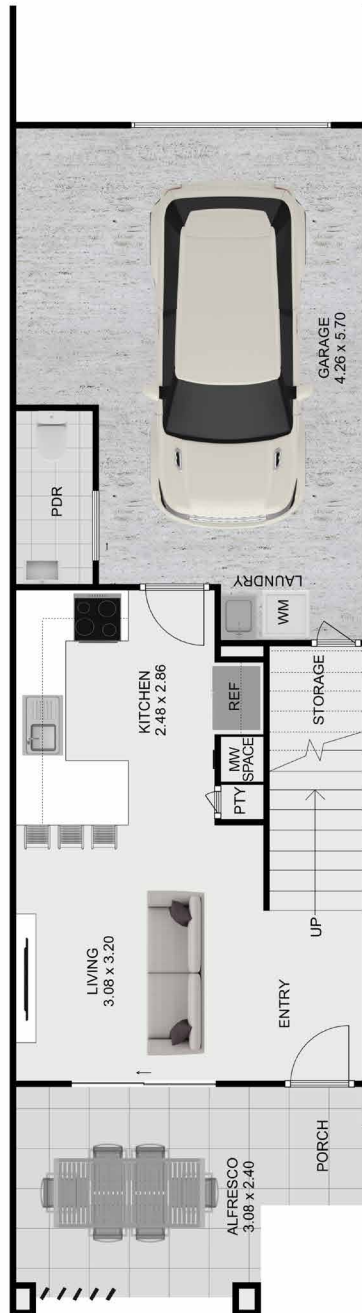
*Images are for illustrative purposes only and may not represent final built product.





CARSELDINE VILLAGE

Inspired living



NAME: ALOE 3

Suits lot size 76m² | House size: 133m²

From **\$460,600***

Sales Office:

520 Beams Road, Carseldine

1300 647 123

carseldinevillage.com.au

*Images are for illustrative purposes only and may not represent final built product



**Queensland
Government**