



CARSELDINE VILLAGE

Inspired living



Different façade options available.



Stylish with great outdoor living

NAME: TAMBA 202

Lot size 167m² | House size: 202m²

The Tamba 202 design features not one but three outdoor living spaces; enjoy the outdoor porch for alfresco dining or escape to your own private balcony upstairs.

Featuring four bedrooms for your growing family and three full bathrooms throughout.

Designed for indoor and outdoor living, this low maintenance home is easy to lock up and leave. The perfect city abode. Direct access to Carseldine Village amenities, parks and gardens are at your doorstep.

Fixed price inclusions:

- Private courtyard
- 'Flexi-Space' on ground floor
- 3.6 kW solar system with 10kW battery
- 2 Daikin split system air-conditioners with D-mobile Wi-Fi remote control

From **\$541,900***

Sales Office:

532 Beams Road, Carseldine

1300 647 123

carseldinevillage.com.au

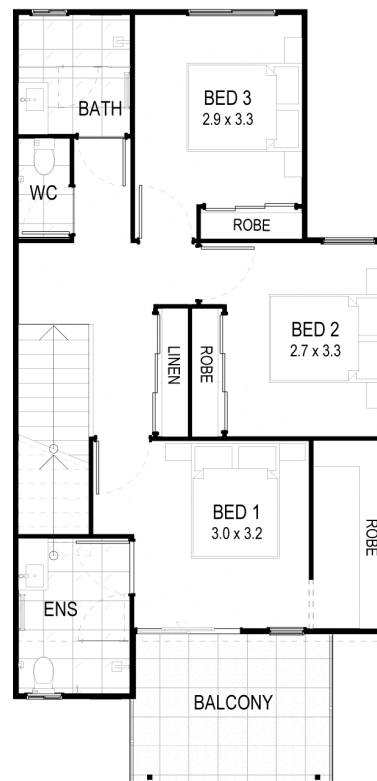
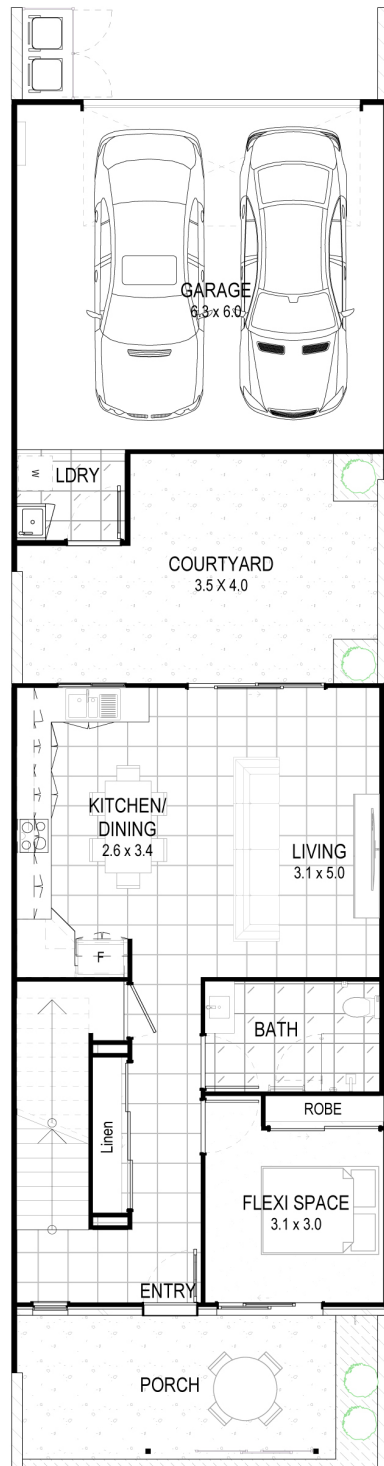
Price correct at time of publication and is subject to change without notice. See carseldinevillage.com.au for further information. Images are for illustrative purposes only and may not represent final built product.





CARSELDINE VILLAGE

Inspired living



NAME: TAMBA 202

Lot size 167m² | House size: 202m²

From **\$541,900***

Sales Office:

532 Beams Road, Carseldine

1300 647 123

carseldinevillage.com.au

Price correct at time of publication and is subject to change without notice. See carseldinevillage.com.au for further information. Images are for illustrative purposes only and may not represent final built product.



Queensland
Government