



CARSELDINE VILLAGE

Inspired living



Different façade options available.

3  2.5  2 

The Daffodil will steal your heart!

NAME: DAFFODIL

Suits lot size 109m² | House size: 159m²

This three-bedroom design with a large double lock up will give you the lifestyle you deserve! With a large open plan kitchen, dining and living room that spills out to a deep external alfresco, you will enjoy your downtime watching the world go by. With an added toilet for convenience to the lower level as well as extra storage, you will be grateful for the additional features of this home.

Upstairs dedicates itself to all three bedrooms to ensure privacy from the bustling living room. The master suite will be comfortable year round with its own air-conditioning, ensuite and WIR and a separate large family bathroom with soaking bath shared between bed two and three resides on this level too.

Features include:

- Roof top 3.3KW Solar Power with battery storage
- Private alfresco for entertaining
- Master bedroom with WIR and ensuite
- Kitchen stone benchtops

From \$556,650*

Sales Office:

520 Beams Road, Carseldine

1300 647 123

carseldinevillage.com.au

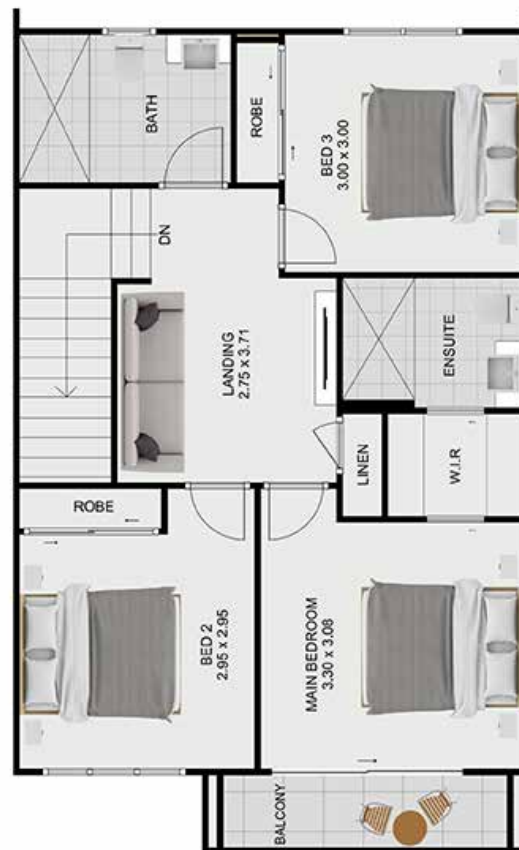
*Images are for illustrative purposes only and may not represent final built product





CARSELDINE VILLAGE

Inspired living



NAME: DAFFODIL

Suits lot size 109m² | House size: 159m²

From **\$556,650***

Sales Office:

520 Beams Road, Carseldine

1300 647 123

carseldinevillage.com.au

*Images are for illustrative purposes only and may not represent final built product



Queensland
Government